

Ground Sled© Instruction manual



Technical Data

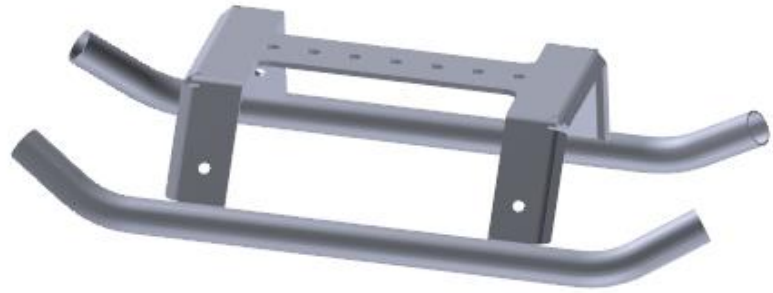
Weight: 720 g

Length: 500 mm

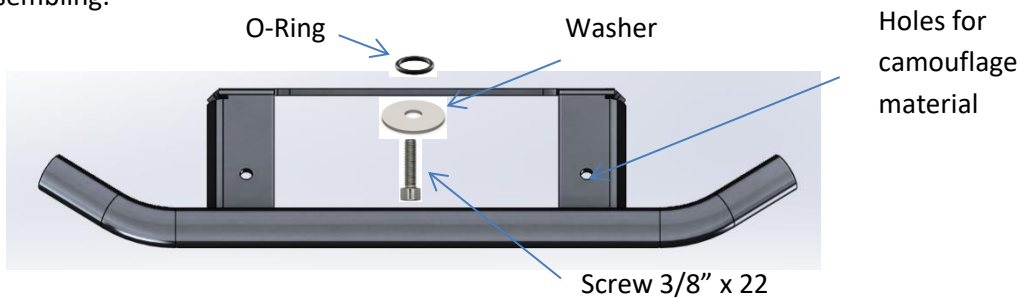
Width: 265 mm

Height: 100 mm

Material: Ground Sled© Aluminium PU-coated, Inox Screw 3/8", Inox Washer, PU O-Ring



Assembling:



Insert the screw through the washer. Insert the combination of screw and washer through one of the holes in the plate of the Ground Sled©. The hole you use shall be one, which gives you a good camera position while you are laying behind the sled in photography position. Secure the combination of screw and washer with the O-ring from the end of the screw. The O-ring is a part, which protects the screw and washer from lost. Fasten your tripod head or gimbal onto the plate of the Ground Sled© with an 8 mm Allen-key.

If your Ground Sled© needs a cleaning, please disassemble it and clean it with fresh water. The ends of the tubes are open and can be rinsed with water. If you use the Ground Sled© on uneven ground it can tilt and cause a damage at your photography equipment.

For transport you can fix it at your backpack or carry it by hand, as you want.

Do not use your Ground Sled© for other things as it is foreseen to use. Use it as a sled for carrying a camera lens combination.

1-Year Warranty from date of buying. Scratches from use are no reason for warranty cases!

SHOTS-PHOTO
Matthias Ogzall
Im Siekkamp 35
D-32758 Detmold
Germany
Mail: mogzall@t-online.de
Mobile: +49 1713108764
Phone: +49 5231 3012324