

# Ground Sled© Instruction manual

## Technical Data

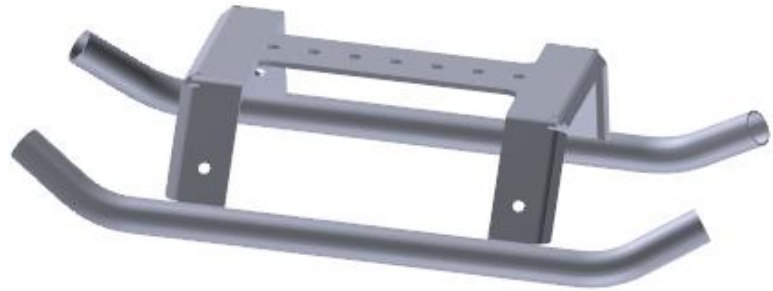
Weight: 720 g

Length: 500 mm

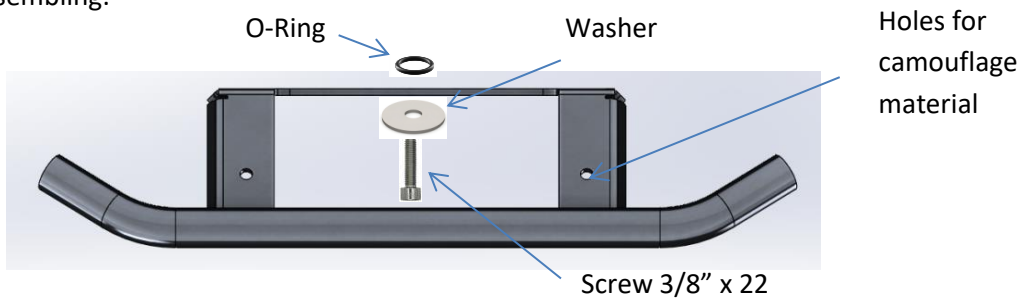
Width: 265 mm

Height: 100 mm

Material: Ground Sled© Aluminium PU-coated, Inox Screw 3/8", Inox Washer, PU O-Ring



## Assembling:



Insert the screw through the washer. Insert the combination of screw and washer through one of the holes in the plate of the Ground Sled©. The hole you use shall be one, which gives you a good camera position while you are lying behind the sled in photography position. Secure the combination of screw and washer with the O-ring from the end of the screw. The O-ring is a part, which protects the screw and washer from being lost. Fasten your tripod head or gimbal onto the plate of the Ground Sled© with an 8 mm Allen-key.

If your Ground Sled© needs cleaning, please disassemble it and clean it with fresh water. The ends of the tubes are open and can be rinsed with water. If you use the Ground Sled© on uneven ground, it can tilt and cause damage to your photography equipment.

For transport, you can fix it to your backpack or carry it by hand, as you wish.

Do not use your Ground Sled© for other things as it is intended for. Use it as a sled for carrying a camera lens combination.

**1-Year Warranty from date of buying. Scratches from use are no reason for warranty cases!**

SHOTS-PHOTO  
Matthias Ogzall  
Im Siekkamp 35  
D-32758 Detmold  
Germany  
Mail: [mogzall@t-online.de](mailto:mogzall@t-online.de)  
Mobile: +49 1713108764  
Phone: +49 5231 3012324